



THE CAMBRIDGE



THE CAMBRIDGE Model number: 22FAC16763CH19
3 beds • 2 baths • 1216 sq.ft. • 16' width • 76' depth

Our home building facilities invest in continuous product and process improvements. Plans, dimensions, features, materials, specifications and availability are subject to change without notice or obligation. Renderings and floor plans are representative likenesses of our homes and may differ from the actual homes. We invite you to tour a Home Center near you and inspect the highest value in quality housing available or call (843) 572-6742 to speak with a Home Consultant. Copyright 2017, CMH. All rights reserved.

<https://www.claytonhomesofcharleston.com>

**CLAYTON HOMES-NORTH
CHARLESTON**

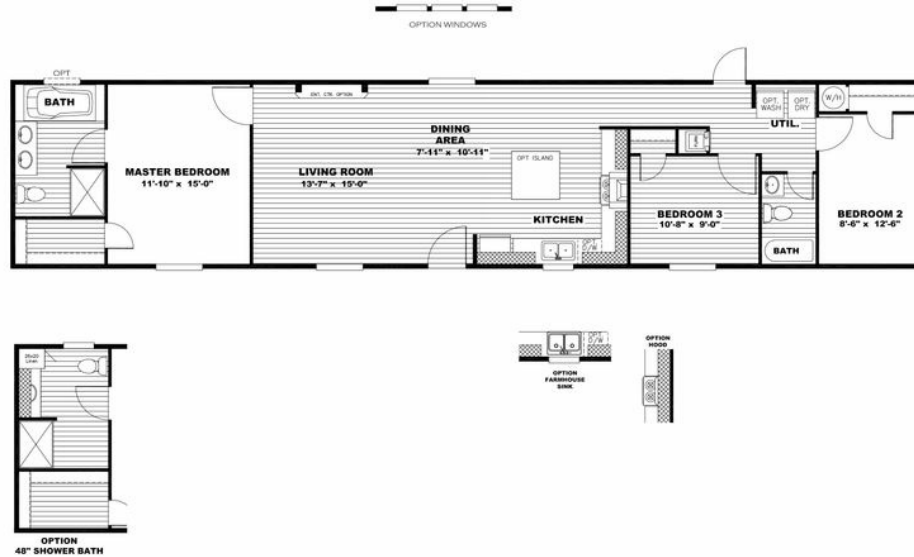
**6581 RIVERS AVE
NORTH CHARLESTON, SC
29406**

Monday - Thursday: 9am - 6pm
Friday: 9am - 6pm
Saturday: 9am - 5pm
Sunday: Closed

(843) 572-6742



THE CAMBRIDGE



THE CAMBRIDGE

Model number: 22FAC16763CH19

3 beds • 2 baths • 1216 sq.ft. • 16' width • 76' depth

Our home building facilities invest in continuous product and process improvements. Plans, dimensions, features, materials, specifications and availability are subject to change without notice or obligation. Renderings and floor plans are representative likenesses of our homes and may differ from the actual homes. We invite you to tour a Home Center near you and inspect the highest value in quality housing available or call (843) 572-6742 to speak with a Home Consultant. Copyright 2017, CMH. All rights reserved.

<https://www.claytonhomesofcharleston.com>

CLAYTON HOMES-NORTH CHARLESTON

6581 RIVERS AVE
NORTH CHARLESTON, SC
29406

Monday - Thursday: 9am - 6pm
Friday: 9am - 6pm
Saturday: 9am - 5pm
Sunday: Closed

(843) 572-6742